

FLOODING EFFECTS FROM MASSACHUSETTS BAY

JOINS PANEL 0231

46° 00' 00" N

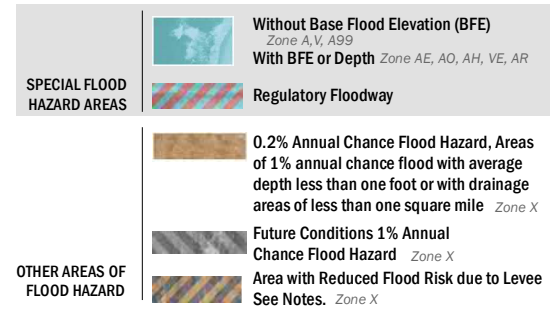
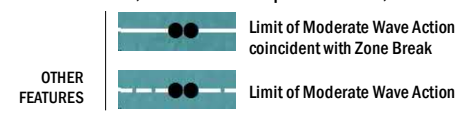
42° 05' 37.5"

70° 41' 15"

JOINS PANEL 0229

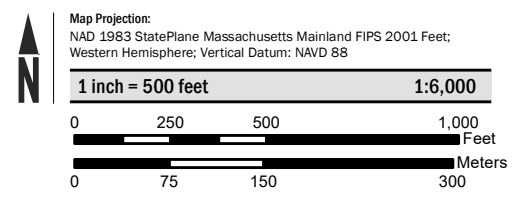
360,000m E

Note: LiMWA information shown on this map panel outside of the revised area reflects LiMWA delineations updated by LOMR 16-01-2154P, effective September 8, 2017.



SCALE

NOTE: BASEMAP IMAGERY DATED 2016 WAS OBTAINED FROM USGS.



FEMA

National Flood Insurance Program

NATIONAL FLOOD INSURANCE PROGRAM

FLOOD INSURANCE RATE MAP

PLYMOUTH COUNTY, MASSACHUSETTS
(All Jurisdictions)

PANEL 227 OF 650

Panel Contains:

COMMUNITY	NUMBER	PANEL	SUFFIX
MARSHFIELD, TOWN OF	250273	0227	K

REVISED TO REFLECT LOMR EFFECTIVE: July 6, 2020

FEMA

VERSION NUMBER
2.1.3.0

MAP NUMBER
25023C0227K

MAP REVISED
NOVEMBER 4, 2016